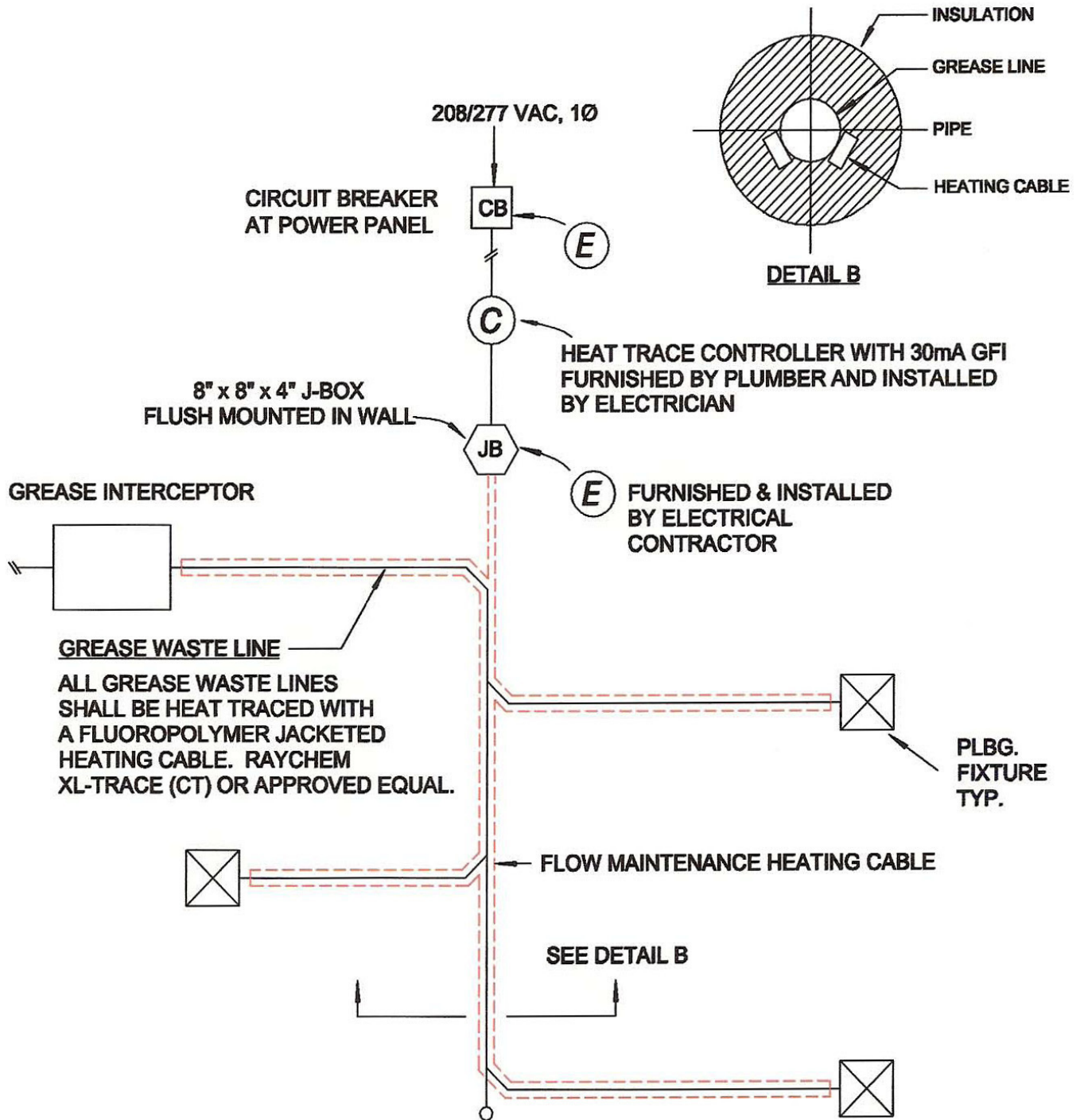


# FLOW MAINTENANCE OF GREASE WASTE



- NOTES:**
1. TAPE HEATING CABLE TO GREASE LINE AT 12 INCH INTERVALS WITH GT-66 GLASS CLOTH TAPE.
  2. FOR PLASTIC PIPES USE AT-180 ALUMINUM FOIL TAPE OVER THE LENGTH OF THE HEATING CABLE.
  3. THE HEATING CABLE IS PROTECTED FROM THE PIPE TO THE POWER CONNECTION BOX IN UL LISTED CONDUIT (MINIMUM 3/4-INCH DIAMETER) SUITABLE FOR THE LOCATION.
  4. INSULATION FOR BELOW GRADE SHALL BE CLOSED-CELL POLYISO-FOAM WITH PVC WATERPROOF JACKET.
  5. INSULATION FOR ABOVE GRADE SHALL BE FIBERGLASS TYPE.
  6. FOLLOW HEATING CABLE DESIGN GUIDE FOR INSULATION THICKNESS.

This drawing detail may be downloaded @ [http://www.caldetection.com/xl\\_trace.html](http://www.caldetection.com/xl_trace.html)