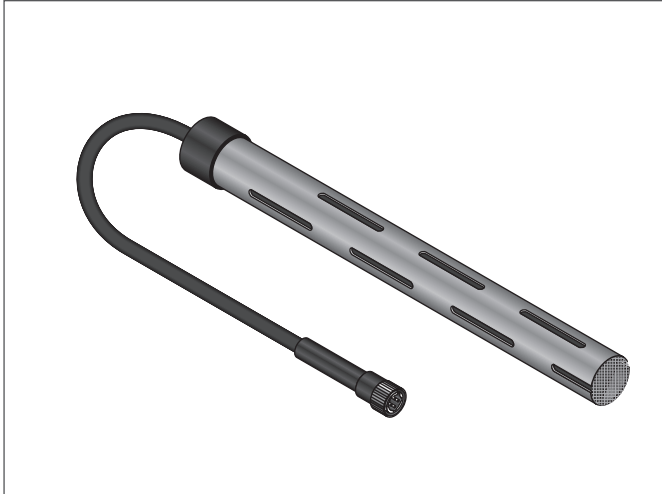


TraceTek TT-FFS Fast Fuel Detection Probe

APPLICATION GUIDE



RESET PROCEDURE

See TT-FFS Care and Cleaning Instructions (H58307)

CONDITIONS OF SAFE USE

- The plastic enclosure poses a potential electrostatic hazard; do not rub or use solvents, clean only with a damp cloth.
- This equipment may not be able to withstand a 500V isolation test between the circuitry and the monitored medium: this should be taken into account during installation.

APPROVALS

Baseefa11ATEX0221X
IECEX BAS 11.0111X



Ex ia IIC T4 Ga [-40°C ≤ ta ≤ +60°C] (U_i = 15V)
Ex ia IIA T4 Ga [-40°C ≤ ta ≤ +60°C] (U_i = 28V)
IEC/EN 60079-0:2009
IEC/EN 60079-11:2007

GENERAL NOTES – DO'S AND DON'T'S

DO

- Connect sensor only to TraceTek modules
- Observe color code when connecting sensor wires (Red to Red, Black to Black, etc)
- Mount sensor in the vertical position in a sump or trench where it will contact leaks
- Seal the wire connections properly with the included kit components
- Make sure sensor slots are clear

DON'T

- Connect directly to any voltage source
- Connect sensor to non-TraceTek equipment
- Drop sensor or cause it to be mechanically shocked
- Remove the protective screen or poke objects into the slots
- Expose sensor to contaminants such as pipe dope, PVC cement, solvents, or dirt

GENERAL INFORMATION

The TraceTek Fast Fuel Sensor is designed to quickly detect hydrocarbon fuels floating on water or collecting in a sump. The probe ignores the presence of water, but reacts to a thin film of fuel floating on the surface. In most cases, the TT-FFS will reset when removed from contact with the spill and the fuel is allowed to evaporate.

Reaction time for the probe is typically less than a few seconds for light or middle weight fuels such as gasoline, jet fuel, and diesel. It is also responsive to crude oil and some heavier weight fuels and heating oil, but becomes progressively slower as the fuel viscosity increases and the volatility decreases.

DESIGN FEATURES

- Fast response to minimal amounts of spilled fuel
- Can be reset for multiple use
- Compatible with entire range of TraceTek Instruments
- Up to four TT-FFS probes can be used with modular branch connectors on a single TraceTek Locating Alarm Module
- Can be used with TT5000 Sensor Cable to form hybrid cable and probe leak detection systems
- Suitable for installation in hazardous area locations up to CID1 (Zone 0) with appropriate safety barrier
- Available with or without TraceTek metal connector
- Rugged Polypropylene housing for vertical mounting in sump or pipe stand

ELECTRICAL PARAMETERS

$$U_i = 15V/28V$$

$$I_i = 300 \text{ mA}$$

$$P_i = 1.125 \text{ W}$$

$$C_i = 0.24 \mu\text{F}$$

$$L_i = 0$$



WWW.THERMAL.PENTAIR.COM

NORTH AMERICA

Tel: +1.800.545.6258
Fax: +1.800.527.5703
Tel: +1.650.216.1526
Fax: +1.650.474.7215
thermal.info@pentair.com

EUROPE, MIDDLE EAST, AFRICA

Tel: +32.16.213.511
Fax: +32.16.213.603
thermal.info@pentair.com

ASIA PACIFIC

Tel: +86.21.2412.1688
Fax: +86.21.5426.2917
cn.thermal.info@pentair.com

LATIN AMERICA

Tel: +55.11.2588.1400
Fax: +55.11.2588.1410
thermal.info@pentair.com

Pentair and TraceTek are owned by Pentair or its global affiliates. All other trademarks are the property of their respective owners. Pentair reserves the right to change specifications without prior notice.